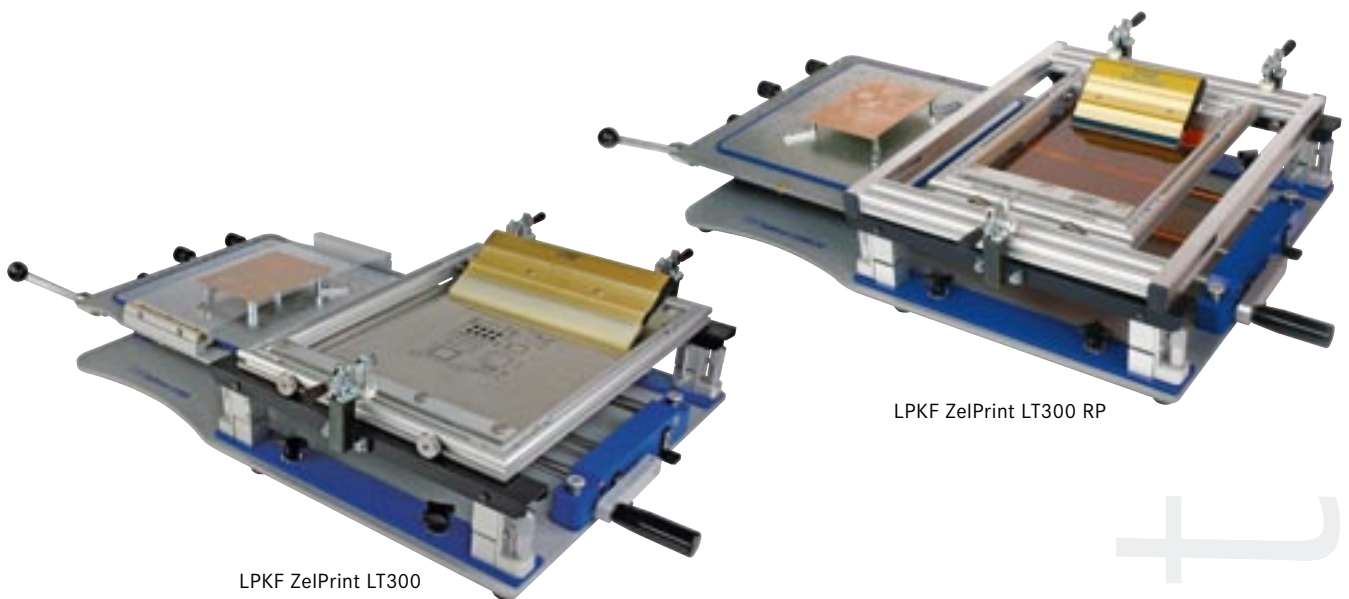


LPKF ZelPrint LT300 and ZelPrint LT300 RP

SMT solder paste printer

Item	LPKF ZelPrint LT300	LPKF ZelPrint LT300 RP
Part #	107356	122241
Order info	Inside front cover	



LPKF ZelPrint LT300

LPKF ZelPrint LT300 RP

The LPKF ZelPrint LT300 is a precision manual stencil printer. This tabletop model can be used for prototypes and for small batches of fine pitch SMT boards. On-contact fine-pitch printing, precise vertical separation between stencil and PCB, and slow snap-off provides superb printing results. This unique solution allows printing of 0.3 mm (12 mil) pitch (ultra-fine-pitch area).

The LPKF ZelPrint LT300 boasts high positioning accuracy, simple operation and the ability to use milled polymer stencils (limited to 0.65 mm [25 mil] pitch), reducing costs and increasing efficiency in the production of circuit board prototypes.

This printer is shipped with a ZelFlex stretching frame for stencils, but is also compatible with various other frames.

The LPKF ZelPrint LT300 RP is equipped with a ZelFlex stretching frame and adapter, used for directly clamping polymer stencils of DIN A4 size, made with a LPKF ProtoMat.

- On-contact fine-pitch printing
- Parallel stencil separation
- Printing populated double-sided boards
- Compatible with various stencil frames
- Test print screen included
- Screen printing
- Optional vacuum table for printing on flex and rigid PCBs

Plotters

Laser

Plating

Multilayer

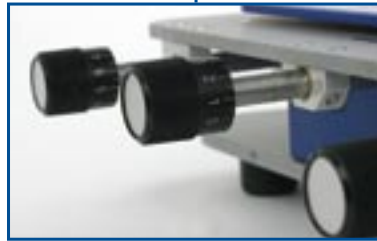
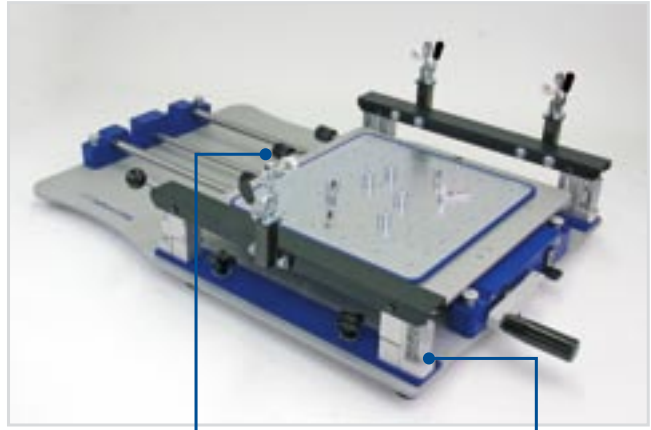
SMT/Finishing

Tech Guide

Index

Fine pitch printing

Precise three-dimensional (X, Y, rotation and clearance) adjustment, including rotation of the PCB and the stencil with micrometer screws, is vital for superior printing results. Excellent positioning accuracy, and a specially developed lever for quick parallel separation of the PCB and stencil, makes ultra-fine-pitch printing possible. Micrometer screws easily and precisely adjust the PCB-screen gap.

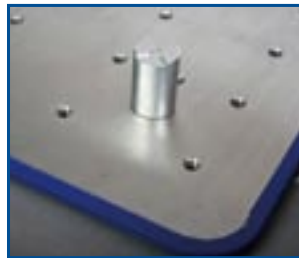


Micrometer screws

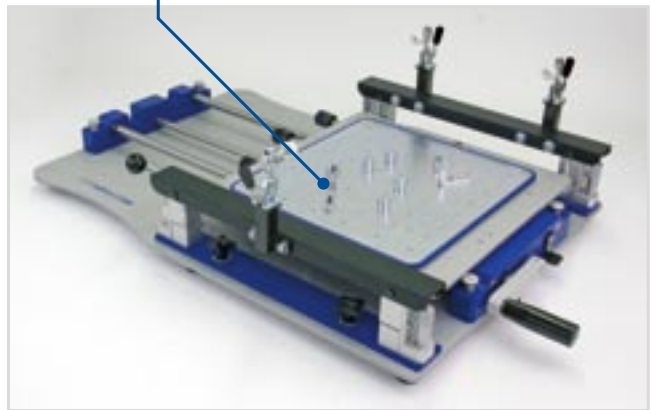
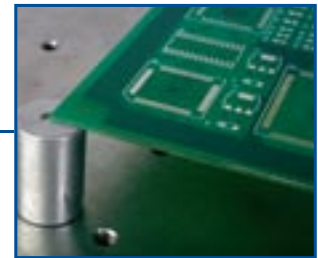
Advanced features

The LPKF ZelPrint LT300 features freely adjustable, high-clearance PCB nesting pins that allow boards populated on one side to be printed on the other. Frames, such as the LPKF ZelFlex, easily mount on adjustable supports and clamp with height and length adjustable fixing clamps. The LPKF ZelPrint LT300 includes a test print screen for fast set-up of new print jobs.

PCB nesting pins

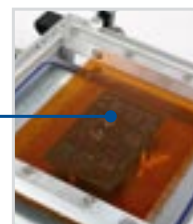


Test print screen



Polymer stencil for rapid PCB prototyping

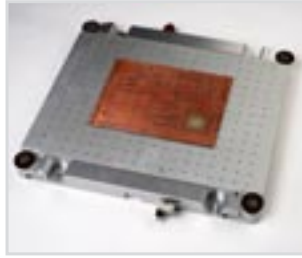
The ability to use milled polymer stencils (limited to 0.625 mm/25 mil pitch) reduces costs and increases efficiency in the production of circuit board prototypes.



Options

Vacuum table

Vacuum table for printing on flex and rigid PCBs as well as for fast clamping of rigid PCBs is available as an option. Flex and rigid boards can be easily moved to the LPKF ProtoPlace together with a vacuum table as 100% compatibility is ensured. The table can be easily and freely moved from one device to another without disconnection or interruption of vacuum.



Vacuum table

Part #	119684
Max. PCB size	229 x 279 mm (9" x 11")
Max. air pressure	7 bar (102 psi)
Operating pressure	1.7–6 bar (24.7–87 psi)
Air consumption	0.3–0.79 l/s

Specifications subject to change.

Special perforated ceramic printing plate is also available as an option for vacuum table to move assembled flex boards an into reflow oven.

Further information upon request!

Accessories

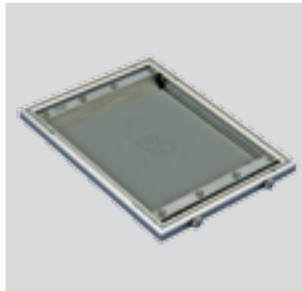


Accessories

ZelFlex Frames for LPKF ZelPrint LT300

Mechanical stretching frame

Insert plastic or metal stencils into double-sided LPKF ZelFlex ZR frames. The fast exchange and patented stretching system optimizes tensioning and easy handling.



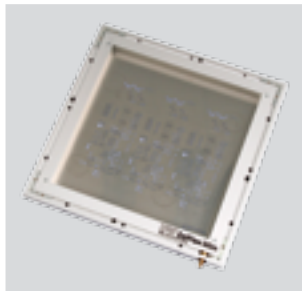
ZelFlex ZR 362x480*

Part #	101321
Type	2-sided mechanical
Print area	260 x 330 mm (10.2" x 13")
Foil size	Up to 310 x 410 mm (12.2" x 16.1")
Squeegee max.	280 mm (11")

* incl. with delivery Specifications subject to change.

Pneumatic stretching frame

Professional quick-release stencil frame with pneumatic 4-side action: Ideal for high-volume environments. Frame maintains tension even after air is disconnected.



ZelFlex Z4P 406x508x25 slim

Part #	115629
Type	4-sided pneumatic
Print area	286 x 388 mm (11.3" x 15.3")
Foil size	386 x 470 mm (15.2" x 18.5")
Squeegee max.	290 mm (11,4")

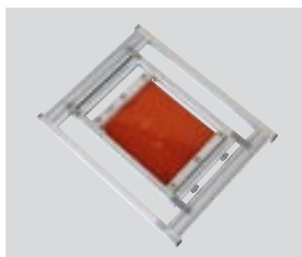
Specifications subject to change.

Further stretching frames upon request!

ZelFlex Frames for LPKF ZelPrint LT300 RP

Mechanical stretching frame

LPKF ZelFlex ZR 266 x 380 is specially designed for DIN A4 polymer stencils.



ZelFlex 266x380 with adapter

Part #	122261
Type	double-sided quick release frame
Print area	164 x 230 mm (6.5" x 9.1")
Foil size	Up to 214 x 310 mm (8,4" x 12.2")
Squeegee max.	180 mm (7.1")

Specifications subject to change.

Squeegees

LPKF offers different types of squeegees for the application of solder paste.

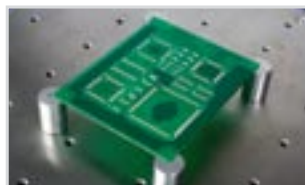


Squeegees		
Part #	Type	Size
101325	Hand squeegee, rubber	150 mm (5.9")
108140	Hand squeegee, rubber *	260 mm (10.2")
122242	Hand squeegee, permalex	150 mm (5.9")
122257	Hand squeegee, permalex	260 mm (10.2")
124869	Hand squeegee, metal	150 mm (5.9")
124870	Hand squeegee, metal	260 mm (10.2")

* incl. with delivery Specifications subject to change.

Test print screen

Test print screen is a unique solution for fast set up of a new print job.



Part # [115632](#)

Specification table

	LPKF ZelPrint LT300	LPKF ZelPrint LT300 RP
Part #	107356	122241
Frame dimensions	<ul style="list-style-type: none"> – Width up to 430 mm (16.92") – Length adjustable from 420 to 520 mm (16.54" to 20.47") – Height adjustable from 20 to 40 mm (0.78" to 1.57") 	<ul style="list-style-type: none"> – Width up to 430 mm (16.92") – Length adjustable from 420 to 520 mm (16.54" to 20.47") – Height adjustable from 20 to 40 mm (0.78" to 1.57")
Max. printing area	300 x 300 mm (11.8" x 11.8")	300 x 300 mm (11.8" x 11.8")
Print stroke	Manual	Manual
Print table adjustment	X and Y ±10 mm (0.4"/400 mil), ϕ±5°	X and Y ±10 mm (0.4"/400 mil), ϕ±5°
Max. PCB thickness	5 mm (0.2"), optionally more	5 mm (0.2"), optionally more
Frame type	ZR 362 x 480	ZR 266 x 380 with adapter
Squeegee type	Hand squeegee, rubber, 260 mm (10.2")	Hand squeegee, metal, 150 mm (5.9")
Accuracy (machine)	±0.025mm (±1 mil)	±0.025mm (±1 mil)
Double-side printing	Max. height of components 15 mm (0.59")	Max. height of components 15 mm (0.59")
Dimensions (W/H/D)	850 x 180 x 530 mm (33.4" x 7.1" x 20.9")	850 x 180 x 530 mm (33.4" x 7.1" x 20.9")
Weight	30 kg (66 lbs)	30 kg (66 lbs)
Ambient operating conditions	Temperature: 15–35 °C (59–95 °F) Humidity: 30–80%	Temperature: 15–35 °C (59–95 °F) Humidity: 30–80%

Specifications subject to change.